



# HEALTH SECTOR

**DISTRICT HEADQUARTERS HOSPITAL**

REQUIREMENTS ARE BASED ON STANDARDS GIVEN IN THE

**NATIONAL REFERENCE MANUAL ON PLANNING & INFRASTRUCTURE STANDARDS**



# HEALTH FACILITIES

## DISTRICT HEADQUARTER HOSPITAL (250 BEDS) – REQUIREMENTS/COST

<b>STAFF</b>	<b>No.</b>
• Specialists	15
• Doctors	30
• Dental Surgeon	04
• Nurses	50
• Lady health Visitors	06
• Midwives/ Maids	86
• Physiotherapist	01
• Dispensers	06
• Radiographers	06
• Pharmacists	04
• Technicians	39
<b><u>Total Staff</u></b>	<b><u>247</u></b>

### **Distribution of 250 beds**

Internal Medical	50
General Surgery	50
Pediatrics	40
Eye and E.N.T	40
Obstetrics and gynaecology	30
Dental	10
Psychiatry	20
Isolation	10
<b><u>Total</u></b>	<b><u>250</u></b>

### **Departments**

### **Areas**

<b>1. ADMINISTRATION SERVICES</b>	<b>5,630 SFT</b>
<ul style="list-style-type: none"> <li>• General Administration</li> <li>• Main Entrance Accommodation</li> <li>• Medical Records</li> </ul>	
<b>2. INPATIENT SERVICES</b>	<b>31,775 SFT</b>
<ul style="list-style-type: none"> <li>• General Acute Wards</li> <li>• Children Wards</li> <li>• Maternity Department</li> <li>• Isolation Beds</li> </ul>	
<b>3. MAIN OPERATING FACILITIES</b>	<b>7,060 SFT</b>
<ul style="list-style-type: none"> <li>• Operation Suits and related Rooms</li> </ul>	
<b>4. DIAGNOSTIC AND TREATMENT</b>	<b>8,400 SFT</b>
<ul style="list-style-type: none"> <li>• X-ray department</li> <li>• Pathology Department</li> <li>• Mortuary Rooms</li> <li>• Department of Physical Medicine</li> <li>• Medical Photography</li> </ul>	



# HEALTH FACILITIES

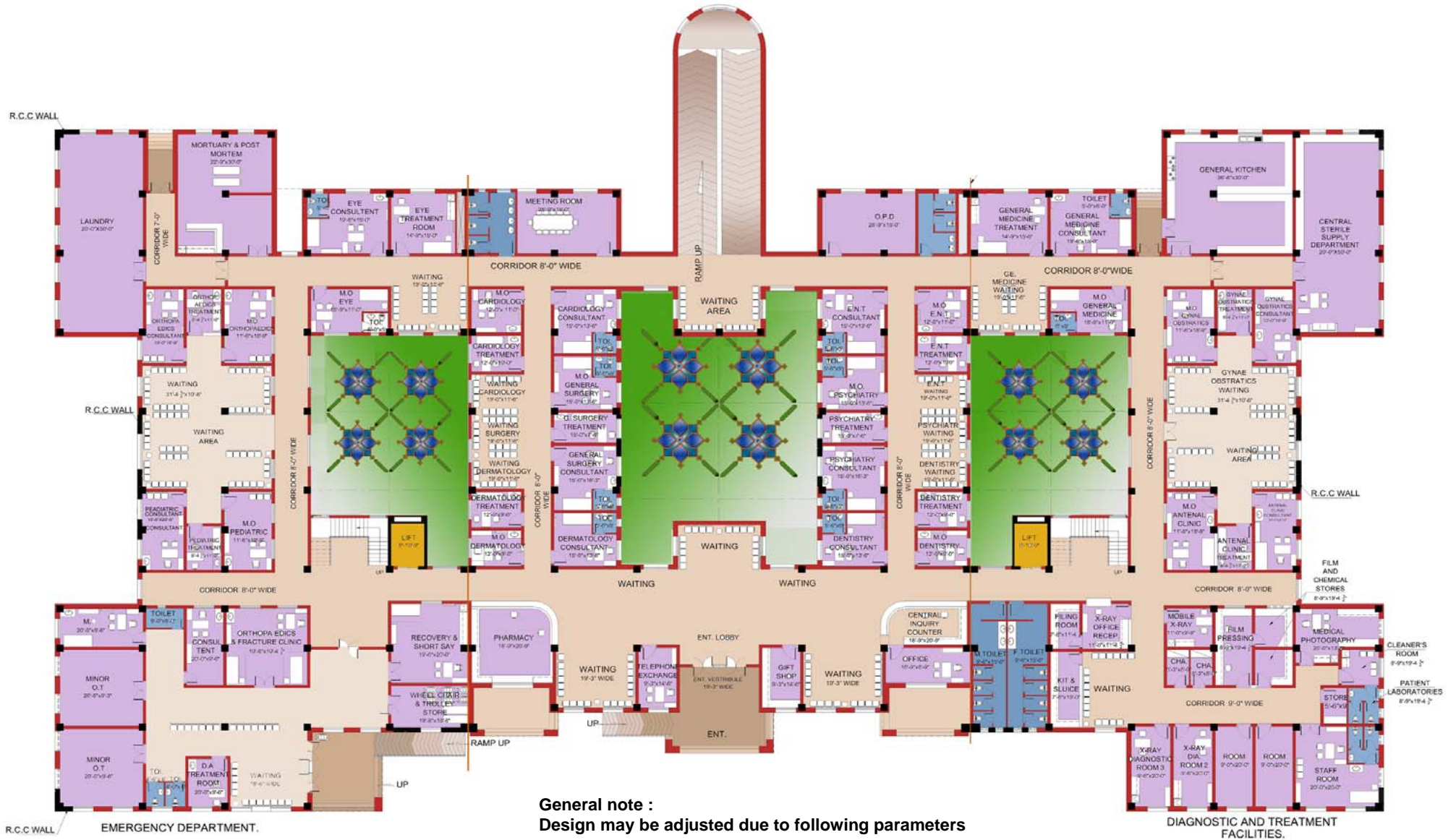
## DISTRICT HEADQUARTER HOSPITAL (250 BEDS) - REQUIREMENTS

<b>Departments</b>	<b>Areas</b>	<b>Departments</b>	<b>Areas</b>
<b>5. OUT PATIENT SERVICES</b>	<b>5,255 SFT</b>	<b>9. PSYCHIATRIC PATIENT DEPARTMENT</b>	<b>4775 SFT</b>
<ul style="list-style-type: none"><li>• OPD (Consulting Suite)</li><li>• OPD (Operation Theater Suite)</li><li>• OPD (Day Ward)</li><li>• OPD (Dental Suite)</li></ul>		<ul style="list-style-type: none"><li>• Short Stay Psychiatric Unit</li><li>• Treatment Centre</li><li>• Psychiatric Ward</li><li>• Rehabilitation centre</li></ul>	
<b>6. EMERGENCY DEPARTMENT</b>	<b>11,755 SFT</b>	<b><u>Total Net Area</u></b>	<b><u>84,000 SFT</u></b>
<ul style="list-style-type: none"><li>• Minor Operation Suits</li><li>• Recovery &amp; Short Stay Suite</li><li>• Orthopedic and fracture Clinic</li><li>• Departmental Accommodation</li></ul>		<b>Circulation Space + Wall</b>	<b>30,000 SFT</b>
<b>7. SERVICE FACILITIES</b>	<b>7,250 SFT</b>	<b>GRAND TOTAL AREA</b>	<b>= 114,000 SFT</b>
<ul style="list-style-type: none"><li>• Pharmacy Department</li><li>• Central Sterile Supply department</li><li>• Central Kitchen</li><li>• Laundry</li></ul>			
<b>8. STAFF FACILITIES</b>	<b>2,100 SFT</b>		
<ul style="list-style-type: none"><li>• Dining / Changing Rooms</li></ul>			

**TYPICAL DESIGN - DISTRICT HEADQUARTER HOSPITAL**



# HEALTH FACILITIES

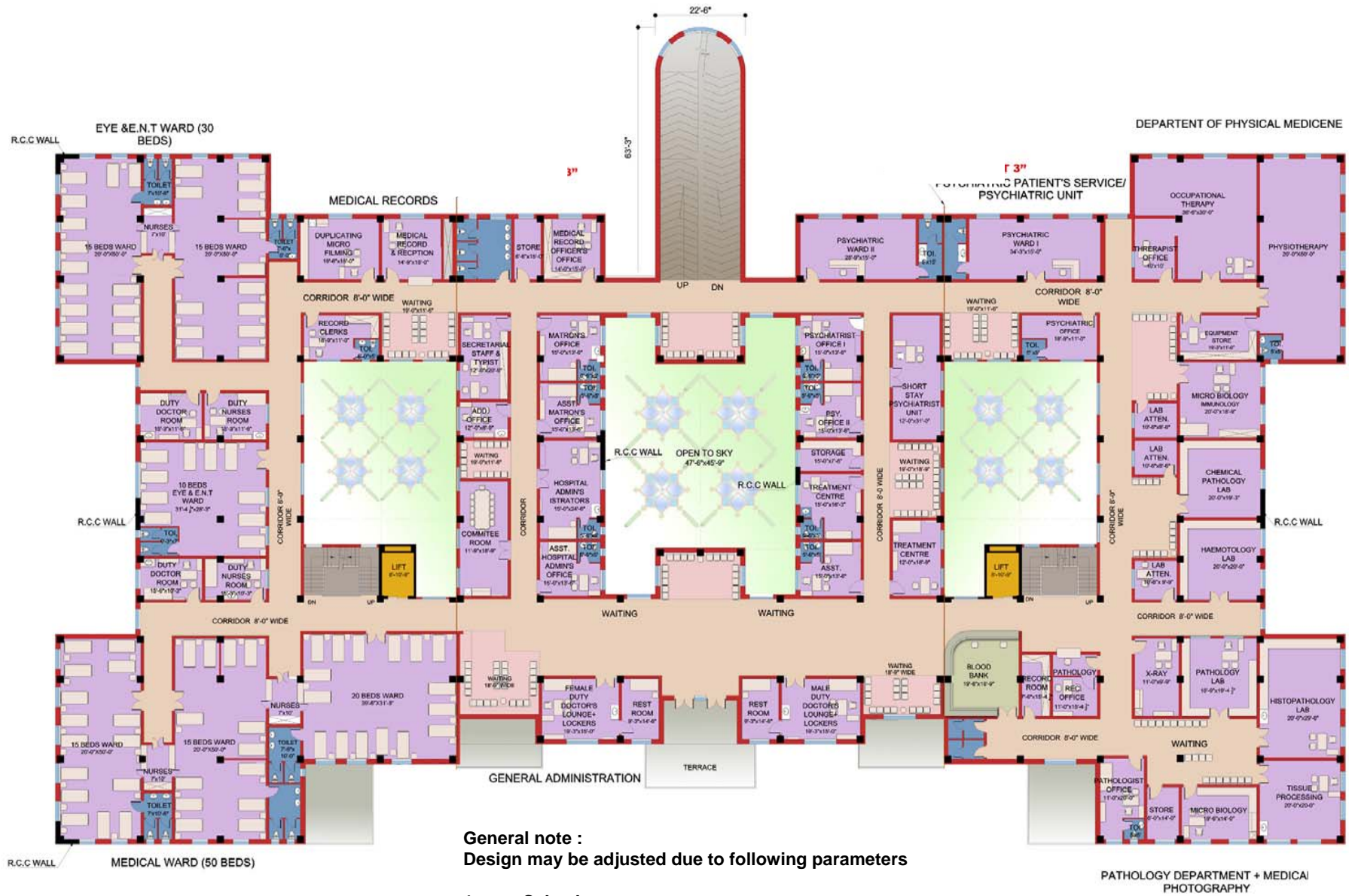


**GROUND FLOOR PLAN**  
**COVERED AREA = 39000 sqft.**

## TYPICAL DESIGN - DISTRICT HEADQUARTER HOSPITAL



# HEALTH FACILITIES

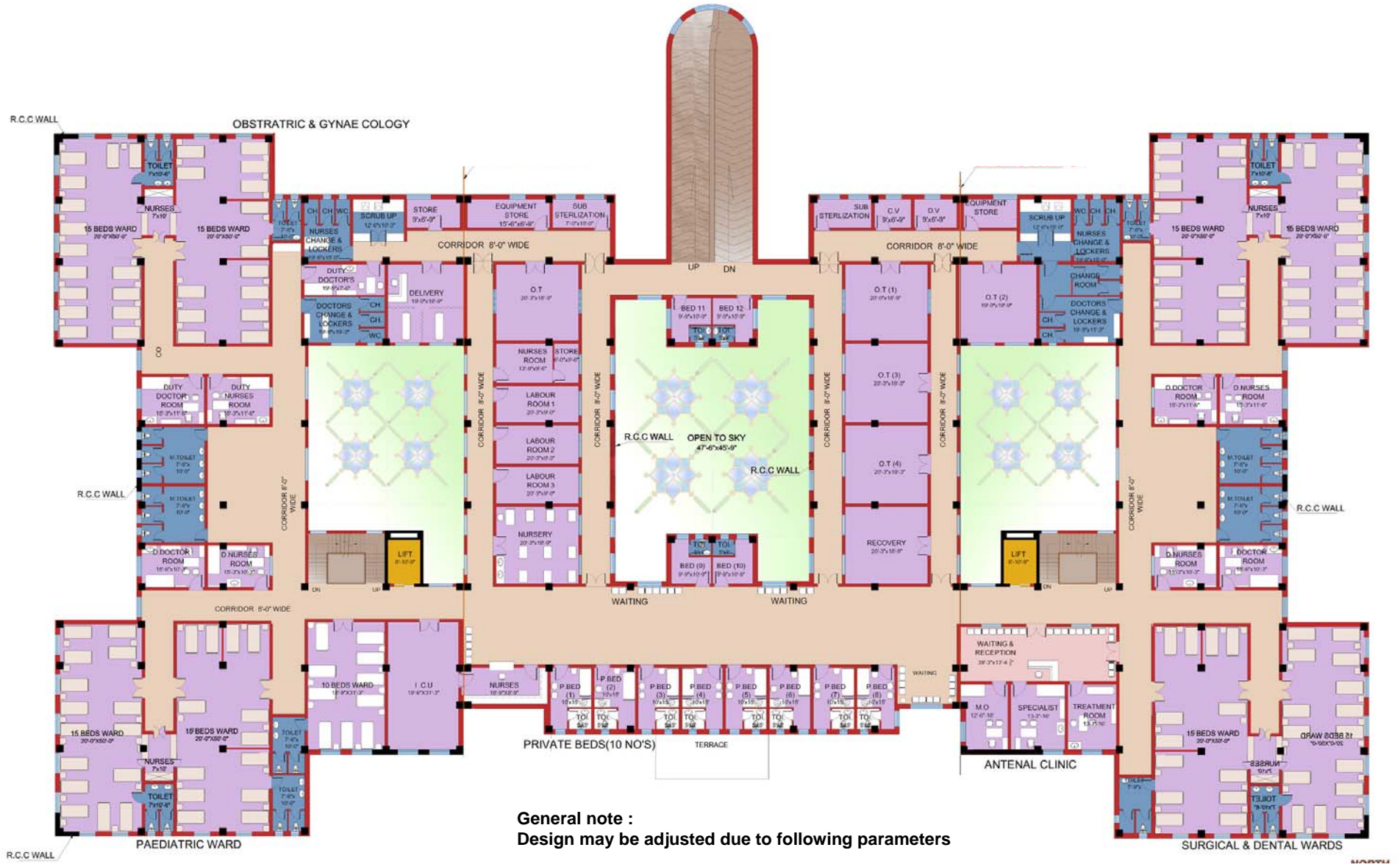


**FIRST FLOOR PLAN**  
COVERED AREA = 37500 Sqft.

## TYPICAL DESIGN - DISTRICT HEADQUARTER HOSPITAL



# HEALTH FACILITIES



**SECOND FLOOR PLAN**  
COVERED AREA = 37500 Sqft.

## TYPICAL DESIGN - DISTRICT HEADQUARTER HOSPITAL



# HEALTH FACILITIES



**TYPICAL DESIGN - DISTRICT HEADQUARTER HOSPITAL**